

State & County Courts

Complete and
Accurate Court
Records Keep Cases
On Track and Firms
Compliant



Most attorneys and their support teams know the best way to maintain accurate, accessible records is to digitize them, especially when using e-filing systems. But what happens inside the courtroom when a document is brought forward as an exhibit? Today's courts require documents in a digitized format. Because obtaining information often happens during proceedings inside courtrooms, scanners must be compact and quiet.

Ricoh's market-leading document scanners and software enable efficient case management by digitizing documents in order to make them readily available to judges, lawyers, clerks of the court, and others.

Critical data is captured ensuring first-time accurate and clean scans to keep court cases on schedule.

RICOH
imagine. change.

High-quality fi Series scanners are needed now more than ever

40M+

The number of lawsuits filed every year in the U.S.*

95%

Of all U.S. cases are filed in state courts vs federal courts[†]

1.3M+

The number of licensed, active attorneys in the U.S.**

83.5M+

The number of cases reported by state trial courts in 2018^{††}

*Source: USFEF (U.S. Financial Education Foundation), March 2021.

**Source: American Bar Association, 2018.

†Source: Court Statistics Project, 2016.

††Source: Court Statistics Project, "State Court Caseload Digest, 2018 Data."

Save time, paper, and space by scanning

Plea motions

Docket changes

Exhibit documents

Police records

Court decisions

Jury records

Case files

Court minutes

Attorney records

Financial statements

Stay compliant. Go digital.

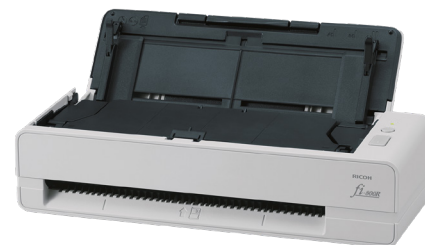
Using high-quality Ricoh imaging solutions, scanner operators in trial courts, appeals courts, and state supreme courts are able to:

- Quietly scan plea motions, exhibits, and supporting documents without distracting from a trial in progress
- Document calendaring of court cases to allow accurate case management
- Produce exceptionally clean images—even of hard-to-capture items like handwritten exhibits
- Easily purge documents that meet their retention schedule
- Improve the accuracy of record keeping—reducing duplications, misfiling, and loss
- Maintain records that show compliance with regulations per state
- Free up space used by filing cabinets or stored documents for other purposes

fi-800R

An ultra-compact scanner that fits into tight spaces, perfect for batch scanning

- Scans a fast 40 pages per minute
- Holds up to 20 pages in the feeder
- 8.5x14" scan area



fi-7480

This scanner goes the extra mile to keep documents straight, reducing interruptions between batches

- Scans a fast 80 pages per minute
- Holds up to 100 pages in the feeder
- 11x17" scan area



PaperStream Capture

Offers powerful image capture optimization, data extraction, and organizational capabilities

- Single button scanning
- Simple user interface
- Unmatched image quality



Ricoh Technology Advantage

Through years of engineering innovation, dedication, and persistence, we've created the high-quality industry-leading solutions Ricoh is known for. You can expect superior engineering standards that produce accurate paper feeding and the highest quality images, all optimized for operator use.

You can also count on worldwide reliability and durability—achieved by fusing a master-craftsman style with advanced technology.